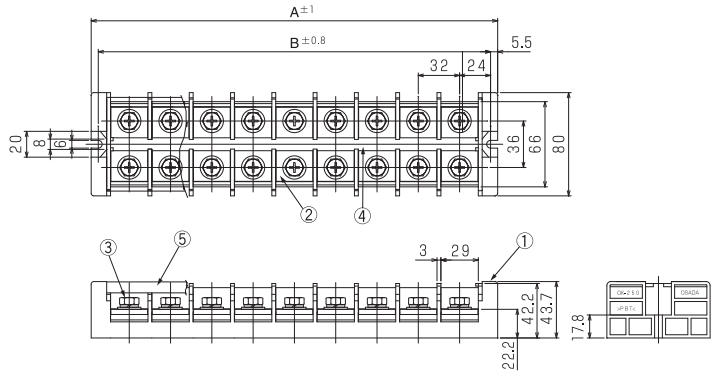
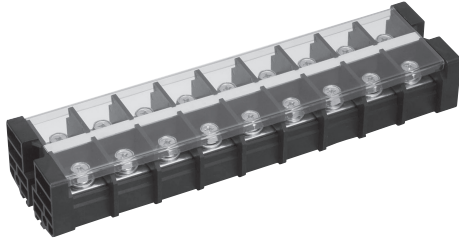


OK-250S

cULus (FW2)

Pitch (terminal to terminal) : 32mm

All-in-one design



Specifications

Electrical Rating	600V, 250A, 285A (※1)
Insulation Resistance	DC500V, 1000MΩ
Withstanding Voltage	AC2500V
Storage Temperature Rating	-40°C~+90°C
Usage Temperature Rating	-40°C~+90°C

※1 : Two ring-molding can be used.

Measurements List of A & B (P : Number of terminals)

P	1	2	3	4	5	6	7	8	9
A		91	123	155	187	219	251	283	315
B		80	112	144	176	208	240	272	304

Composition

No.	Part Name	Materials	Flame Class	Treatment	Remarks
①	Base	PBT	94V-0		Black
②	Terminal	Brass		Ni	
③	Bolt (M8×20L)	Steel		Cr ³⁺ Zn	
④	Marking Strip				
⑤	Cover	Polycarbonate	94V-0		