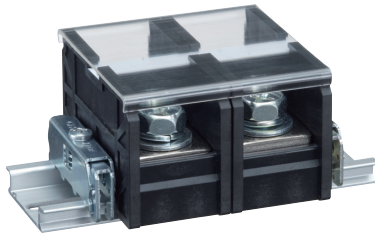


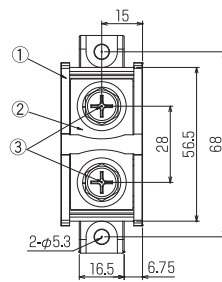
OK-12



OK-12F With Cover and Marking Strip

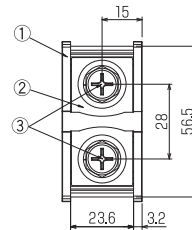
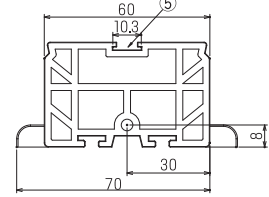
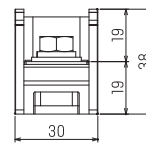


OK-12R Cover and Marking Strip (Optional)

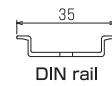
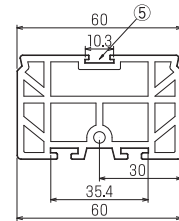
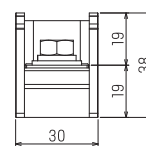


Pitch (terminal to terminal) : 30mm

[fix-type] OK-12F



[DIN rail] OK-12R



DIN rail

Specifications

Electrical Rating	600V, 160A
Insulation Resistance	DC500V, 1000MΩ
Withstanding Voltage	AC2500V
Storage Temperature Rating	-40°C~+90°C
Usage Temperature Rating	-40°C~+90°C

Composition

No.	Part Name	Materials	Flame Class	Treatment	Remarks
①	Base	PBT	94V-0		Black
②	Terminal	Brass		Ni	
③	Screw M8x15L	Steel		Cr ³⁺ Zn	SW,PW
④	Cover	Polycarbonate			
⑤	Marking Strip				