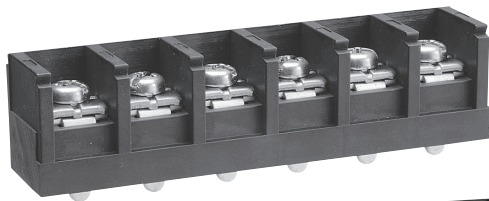


OTB-911

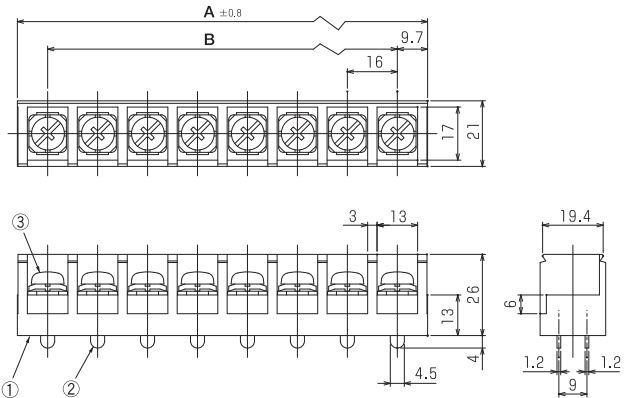
UL US (FW2)

Pitch (terminal to terminal) : 16mm



OTB-911-MW

※Instantly Detachable Cover (Optional)



Specifications

| | |
|----------------------------|----------------|
| Electrical Rating | 600V, 100A |
| Insulation Resistance | DC500V, 1000MΩ |
| Withstanding Voltage | AC2500V |
| Storage Temperature Rating | -40°C~+90°C |
| Usage Temperature Rating | -40°C~+90°C |

Composition

| No. | Part Name | Materials | Flame Class | Treatment | Remarks |
|-----|----------------|-----------|-------------|-----------|----------|
| ① | Base | PBT | 94V-0 | | Black |
| ② | Terminal | Brass | | Sn | |
| ③ | Screw (M5×12L) | Steel | | Ni | F Series |

Measurements List of A & B (P : Number of terminals)

| | P | 2 | 3 | 4 | 5 | 6 | 7 | 8 | 9 | 10 | 11 | 12 |
|------------|---|------|------|------|-------|-------|-------|-------|-------|-------|-------|-------|
| OTB-911 | A | 35.4 | 51.4 | 67.4 | 83.4 | 99.4 | 115.4 | 131.4 | 147.4 | 163.4 | 179.4 | 195.4 |
| | B | 16 | 32 | 48 | 64 | 80 | 96 | 112 | 128 | 144 | 160 | 176 |
| OTB-911-MW | A | 67.4 | 83.4 | 99.4 | 115.4 | 131.4 | 147.4 | 163.4 | 179.4 | 195.4 | 211.4 | 227.4 |
| | B | 48 | 64 | 80 | 96 | 112 | 128 | 144 | 160 | 176 | 192 | 208 |

